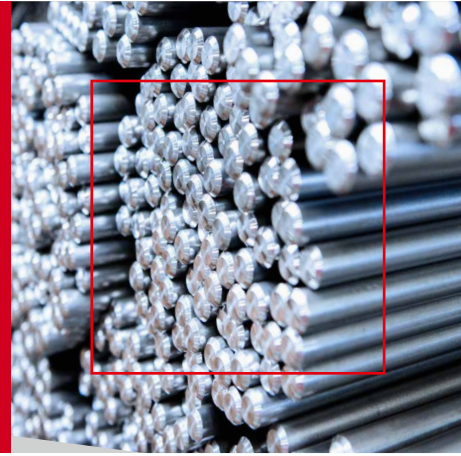


# We provide tailormade steel

Individually manufactured with the highest quality and delivered in time.



For bright steel which complies with exact customer requirements, at GeisslerWista GmbH we combine the expertise of our specialists with extremely precise technology and up to 100 years of production experience. In close collaboration with our customers, we produce high quality with fast, flexible and on-time delivery: steel just as required.

## Production possibilities

- Peeling 20 - 250 mm
- Polishing & straightening 20 mm - 250 mm
- Surface hardening 20 mm - 160 mm
- Grinding 20 mm - 160 mm
- End machining on a small-scale basis 40 mm - 350 mm

## Dimensions stocked and grades

### NON-ALLOY HIGH-GRADE STEEL

EN 10277-2/EN 10278 ISO 286-2

S355J2	Mat.No. 1.0570
Peeled Toleranz h9	80.00 - 200.00mm
C45	Mat.No. 1.0502
Peeled Tolerance h9	80.00 - 200.00mm
Ground Tolerance h6	20.00 - 140.00mm

### QUENCHED & TEMPERED STEEL

EN 10277-5/EN 10278 ISO 286-2

42 CrMo(S)4	QT	Mat.No. 1.7225/7227
geschält Toleranz h9		20.00 - 140.00mm

### FREE-CUTTING STEEL

EN 10277-3/EN 10278 ISO 286-2

11SMn30	Mat.No. 1.0715
Peeled Tolerance h9	100.00 - 210.00mm
11SMnPb30	Mat.No. 1.0718
Peeled Tolerance h9	100.00 - 200.00mm

## Commissioned work

We also offer the listed machining options as commissioned work. In addition to machining of steel/ferrous alloys, we also have many years of experience working with non-ferrous metals such as nickel-based/copper alloys.

## Peeling of pipes

Minimum thickness for finished sizes:

- Up to 50 mm = 5 mm
- 50 - 80 mm = 8 mm
- 80 - 150 mm = 10 mm
- 150 - 170 mm = 13 mm
- 170 - 210 mm = 15 mm

### GUIDE SHAFT

Induction surface hardened HRC 60-64

Cf53	peeled + ground	Mat.No. 1.1213
Tolerance h6	20.00 - 25.00 mm	ISH*: 1.1 - 1.4 mm
Tolerance h6	30.00 - 35.00 mm	ISH*: 1.5 - 1.8 mm
Tolerance h6	40.00 - 50.00 mm	ISH*: 1.8 - 2.1 mm
Tolerance h6	60.00 - 80.00 mm	ISH*: 2.1 - 2.4 mm
Tolerance h6	100.00 mm	ISH*: 2.5 - 2.8 mm

### CORROSION AND ACID-RESISTANT GUIDE SHAFT

Induction surface hardened HRC 51-56

X46Cr13/X90CrMoV18	peeled + ground	Mat.No. 1.4034/4112
Tolerance h6	20.00 - 25.00 mm	ISH*: 1.1 - 1.5 mm
Tolerance h6	30.00 - 40.00 mm	ISH*: 1.5 - 2.0 mm
Tolerance h6	50.00 - 60.00 mm	ISH*: 2.0 - 2.5 mm

\*induction surface hardening

## We put our passion into steel

Since 1993 we have been transforming our passion for steel into tailormade products.

To follow our customer's requirements we offer which only a very few steel distributors can do:

Maximum flexibility, reliability, individual solutions and speed

### MATERIAL WITH ELEVATED AND LOW-TEMPERATURE PROPERTIES

In accordance with EN 10269, suitable in accordance with DIN 17240/ 17280, in accordance with AD 2000 Merkblatt W 7/W 10, Pressure Equipment Directive (PED) 2014/68 EU, acceptance in accordance with EN 10204 3.1 and 3.2 TÜV

C 35 E	QT	Mat.No. 1.1181
Bright steel Tol. h9		10.68 - 80.00mm
Steel bars EN 10060		32.00 - 83.00mm

25 CrMo 4	QT	Mat.No. 1.7218
Bright steel Tol. h9		10.00 - 170.00mm
Steel bars EN 10060		22.00 - 180.00mm
Hexagon Tol. h11		18.00 - 36.00mm

21 CrMo V 57	QT	Mat.No. 1.7709
Bright steel Tol. h9		8.90 - 75.75mm
Steel bars EN 10060		20.00 - 240.00mm
Hexagon Tol. h11		18.00 - 50.00mm

40 CrMo V 4-6	QT	Mat.No. 1.7711
Bright steel Tol. h9		14.52 - 52.13mm
Steel bars EN 10060		20.00 - 210.00mm

X 22 CrMo V 12-1	QT	Mat.No. 1.4923
Bright steel Tol. h9		14.52 - 52.13mm
Steel bars EN 10060		40.00 - 190.00mm

42 CrMo 4	QT	Mat.No. 1.7225
Bright steel Tol. h9		11.39 - 59.75mm
Steel bars EN 10060		22.00 - 70.00mm

X 19 CrMoNbVN 11-1	QT	Mat.No. 1.4913
Steel bars EN 10060		55.00 - 180.00mm

### QUENCHED & TEMPERED STEEL

In accordance with EN ISO 898-1, FK 5.6 - 12.9, WAZ 3.1

S 355 J2G3	C+N	FK 5.6
Bright steel Tol. h9		10.00 - 30.00mm

36Mn6/36CrB4	QT	FK 8.8
Bright steel Tol. h9		5.00 - 38.00mm

42 CrMo4	QT	FK 8.8
Bright steel Tol. h9		42.00 - 110.00mm
Steel bars EN 10060		44.00 - 115.00mm

B7/L7/42 Cr Mo 4	QT	ASTM-A 193/320 FK 8.8
Bright steel Tol. h9		10.72 - 59.75mm
Steel bars EN 10060		20.00 - 70.00mm

42 CrMo4	QT	FK 10.9
Bright steel Tol. h9		5.00 - 40.00mm
Steel bars EN 10060		20.00 - 42.00mm

34 CrNiMo 6	QT	FK 10.9
Bright steel Tol. h9		20.00 - 100.00mm
Steel bars EN 10060		21.00 - 105.00mm

30 CrNiMo 8	QT	FK 12.9
Bright steel Tol. h9		18.00 - 40.00mm
Steel bars EN 10060		20.00 - 42.00mm

42 CrNiMo4	QT	FK 12.9
Bright steel Tol. h9		10.76 - 32.00mm
Steel bars EN 10060		23.00 - 35.00mm

### QUENCHED & TEMPERED STEEL

In accordance with EN 10277-5/EN 10083-3, WAZ 3.1

42 CrMo 4	QT	Mat.No. 1.7225
Bright steel Tol. h9		5.00 - 120.00mm
Steel bars EN 10060		20.00 - 125.00mm
Hexagon Tol. h11		22.00 - 55.00mm

34 CrNiMo 6	QT	Mat.No. 1.6582
Bright steel Tol. h9		16.00 - 120.00mm
Steel bars EN 10060		20.00 - 125.00mm

30 CrNiMo 8	QT	Mat.No. 1.6580
Bright steel Tol. h9		20.00 - 95.00mm
Steel bars EN 10060		21.00 - 100.00mm

### BALL AND ROLLER BEARING STEEL

In accordance with EN ISO 683-17/DIN 17230, WAZ 3.1

100 Cr 6 AC	Mat.No. 1.3505
Bright steel Tol. h9	5.00 - 65.00mm
Steel bars EN 10060	30.00 - 200.00mm

### ASTM MATERIAL

In accordance with EN 10269, ASME SA 193, WAZ 3.1

B7/L7/42 CrMo 4	QT	ASTM-A 193/320
Bright steel Tol. h9		10.72 - 59.75mm
Steel bars EN 10060		20.00 - 75.00mm

B7/42 CrMo 4	QT	ASTM-A 193
Bright steel Tol. h9		42.00 - 100.00mm
Steel bars EN 10060		44.00 - 115.00mm

B16/40 CrMoV4-6	QT	ASTM-A 193
Bright steel Tol. h9		14.52 - 100.00mm
Steel bars EN 10060		20.00 - 210.00mm

### STAINLESS STEEL

In accordance with EN 3506-1 / EN 10272/10088-3 and AD 2000 Merkblatt W2/W10, WAZ 3.1

W.-NR. 1.4301 A 2 - 70 < 20 mm	
Bright steel Tol. h9	10.76 - 41.83mm

W.-NR. 1.4541 A 3 - 70 < 20 mm	
Bright steel Tol. h9	10.76 - 33.25mm

W.-NR. 1.4571 A 4 - 70 < 20 mm	
Bright steel Tol. h9	10.76 - 33.25mm